



23001 Industrial Blvd, Rogers, MN 55374 / 1-866-527-7637
www.motoalliance.com

DENALI Plow Mount MA11122 2014-2017 Honda Rancher / Foreman

Thank you for purchasing a DENALI plow mount. You now own a premium, custom plow mount to allow you to use your plow with your UTV/SxS. Please note the following instructions and heed all warnings.

- Your UTV/SxS and/or plow system can cause death or injury. Please use caution and common sense when operating your unit.
- Read your Plow Operator Manual, your Winch Operator Manual, and all warning labels before operating your UTV/SxS.
- Operate your UTV/SxS at a walking speed with the blade installed. Do not exceed 5 mph (8 km/h) even with the blade up.
- Do not operate the UTV/SxS on slopes greater than 10 degrees with the plow installed.
- Always lower the plow to the down position before leaving your UTV/SxS unattended.

SEVERE INJURY OR DEATH MAY RESULT IF YOU ARE NEGLIGENT.

MA11122

DENALI Honda Rancher / Foreman Plow Mount

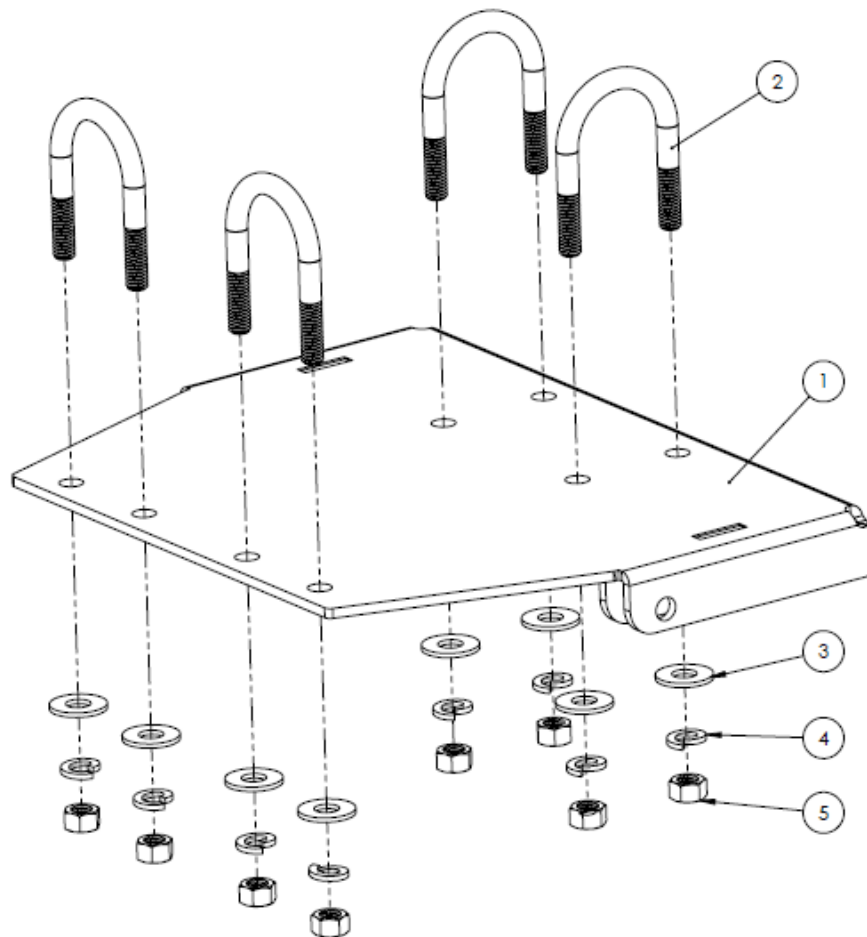


motoalliance
23001 Industrial Blvd
Rogers, MN 55374
866.527.7637

Please verify that all hardware and parts are included in your package.

Kit Contents:

Part #	Qty	Description
1	1	MA11122 Plow Mount
2	4	3/8" x 1.75" ID U-Bolt
3	8	3/8" Flat Washer
4	8	3/8" Lock Washer
5	8	3/8" Hex Head Nut



MA11719 Plow Assembly View

1. Remove the front plastic skid plate from the underbody of the vehicle as shown in Figure 1.



Figure 1

2. Hang the four (4) 3/8" x 1.75" ID U-Bolts into place as shown in Figure 2.

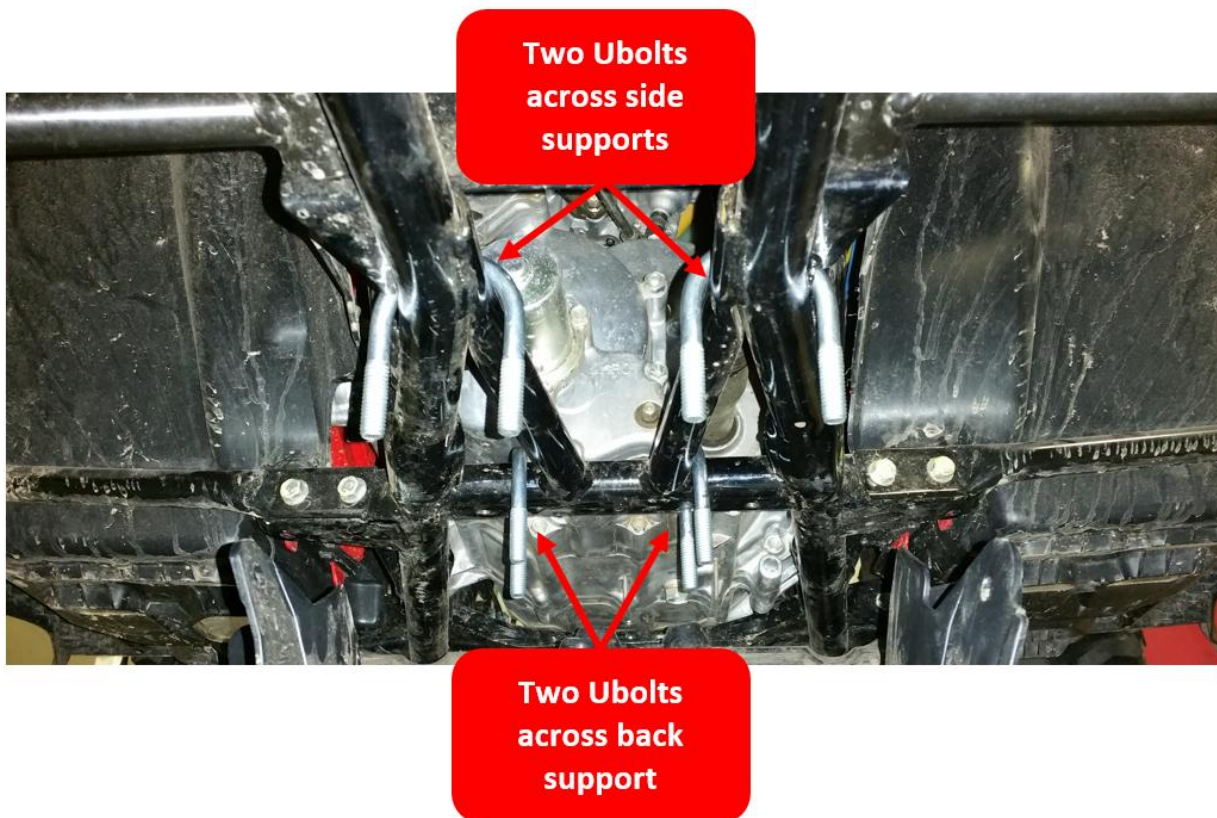


Figure 2



3. Cut out the Skid Plate Drilling Template at the back of this manual and place it on top of your skid plate as shown in Figure 3.

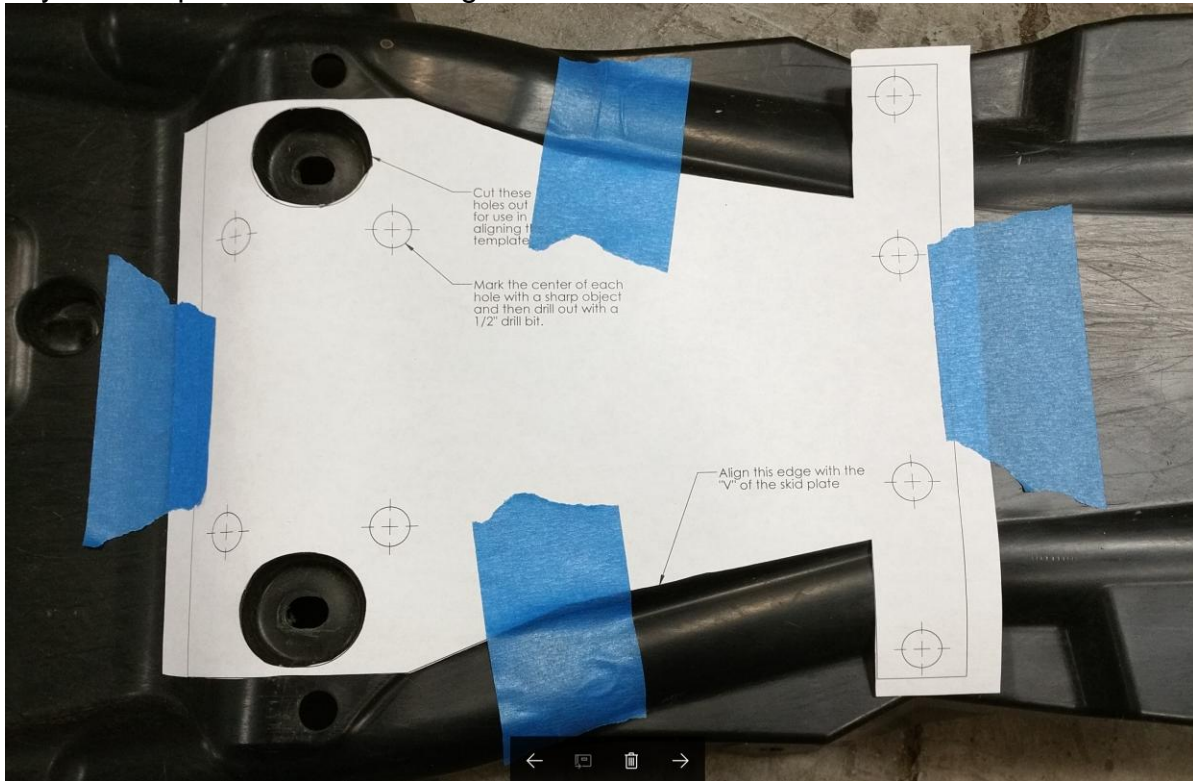


Figure 3

4. Tape the template into place and mark the center of the drilling holes with a sharp object. **Note: Before drilling verify that the location you have marked in your skid plate line up with the four (4) 3/8" x 1.75" ID U-Bolts hung in step 2.**
5. Use a 1/2" drill bit to drill out the holes.
6. Hook the back end of the skid plate into its original mounting point on the machine and let the front end hang down as shown in Figure 1.
7. Slowly raise the skid plate up into place. From the front of the vehicle, reach over the hanging skid plate and guide the back two (2) 3/8" x 1.75" ID U-Bolts through the holes drilled in step 5.
8. Once the back two (2) 3/8" x 1.75" ID U-Bolts are through the skid plate, use four (4) 3/8" Hex Head Nuts to secure the (2) 3/8" x 1.75" ID U-Bolts through the skid plate.



9. Continue raising the skid plate into place. Again, reach over the skid plate and guide the front two (2) 3/8" x 1.75" ID U-Bolts through the holes drilled in step 5.
10. Once the front two (2) 3/8" x 1.75" ID U-Bolts are through the skid plate, use four (4) 3/8" Hex Head Nuts to secure the (2) 3/8" x 1.75" ID U-Bolts through the skid plate.
Note: No mount is installed yet. See Figure 4.



Figure 4

11. Reattach the remaining fasteners that hold the skid plate to the frame.
12. Remove the eight (8) 3/8" Hex Head Nuts installed in Steps 8 and 10 from the four (4) 3/8" x 1.75" ID U-Bolts.
13. Lift the MA11122 Skid Plate up to the hanging U-bolts being careful not to push the four (4) 3/8" x 1.75" ID U-Bolts through the skid plate. Guide the U-bolts into their respective holes.



motoalliance

23001 Industrial Blvd

Rogers, MN 55374

866.527.7637

MA11122

DENALI Honda Rancher / Foreman Plow Mount

14. Secure the MA11122 mount with the eight (8) 3/8" Flat Washers, the eight (8) 3/8" Lock Washers, and the eight (8) 3/8" Hex Head Nuts as shown in the Assembly View.

15. Verify that the MA11122 mount is lined up squarely and tighten down all hardware.

After First Time Use

After the first use of your plow, check and retighten all hardware at least once, in case your frame has flexed and the Plow Mount has loosened.



Final Installation View